

NanoLeap Open Day 2017 Workshop

H2020-NMP-PILOTS-2014

www.nanoleap.eu

Date: 19th January 2017

Place: *IMDEA Nanociencia*
Faraday, 9
Ciudad Universitaria de Cantoblanco
28049, Madrid
(España)
<http://www.nanoscience.imdea.org/>

Accommodation & Travel Info

Accommodation and Travel Information

The NanoLeap Open Day Workshop 2016 is being organised by **Acciona, IMDEA and Cambridge Nanomaterials Technology Ltd.**

The Workshop will take place in Madrid - Spain at

IMDEA Nanociencia:

Faraday, 9
Ciudad Universitaria de Cantoblanco
28049, Madrid
Spain



Madrid is located by the Manzanares River in the centre of both the country and the Community of Madrid. As the capital city of Spain, seat of government, and residence of the Spanish monarch, Madrid is also the political, economic and cultural centre of Spain.

While Madrid possesses modern infrastructure, it has preserved the look and feel of many of its historic neighbourhoods and streets. Its landmarks include the Royal Palace of Madrid; the Royal Theatre with its restored 1850 Opera House; the Buen Retiro Park, founded in 1631; the 19th-century National Library building (founded in 1712) containing some of Spain's historical archives; a large number of national museums, and the Golden Triangle of Art, located along the Paseo del Prado.



How to reach the Venue

Madrid Institute for Advanced Studies in Nanoscience IMDEA Nanoscience / IMDEA Nanociencia



**Calle Faraday 9,
Ciudad Universitaria de Cantoblanco
28049, Madrid, SPAIN**
Contact Reception (24h) +34 91 299 8700



How to get...

...from the Airport "Madrid Adolfo Suarez"

If you arrive at terminal T4, there is a "Cercanías" train line C-1, which brings you to "Chamartin" in just 11 mins, where you can switch to line C-4 to bring you to the **Campus** (see below).

If you want to go downtown, you can just further proceed with C-1 downtown to "Atocha". To get to "Sol" you switch to lines C-3 or C-4.

If you arrive at Terminal T1, 2 or 3: You can take the (free) shuttle bus to T4 and proceed as previously described. Alternatively, there is a Metro (no. 8) which brings you to "Nuevos Ministerios" (ca. 20-25 from T1-3). To get to the Campus, switch to Cercanías line C-4 (see below).

To get downtown (Sol, Atocha) from there, proceed with metro (lines 6 and 1) or by Cercanías.

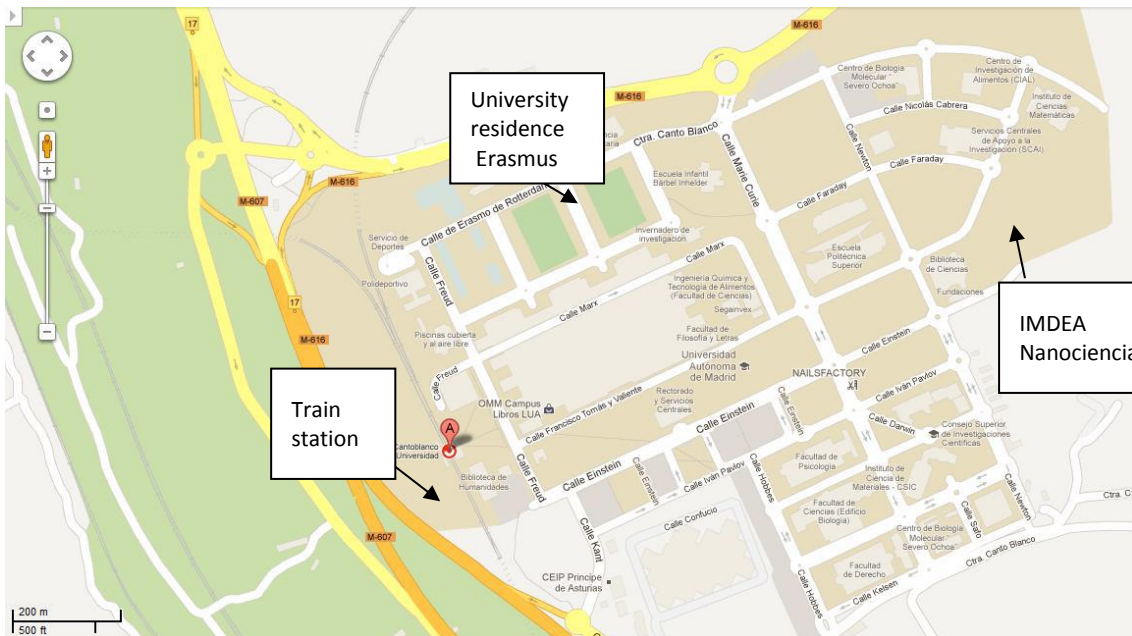
...to the Campus: Take the "Cercanías" train line C-4 in the direction "Colmenar Viejo" or "Alcobendas/San Sebastian de los Reyes" and stop at "Cantoblanco Universidad". From Sol, the train takes about 20 min (last train: 23:27 h):

<http://www.renfe.com/EN/viajeros/cercanias/madrid/index.html>

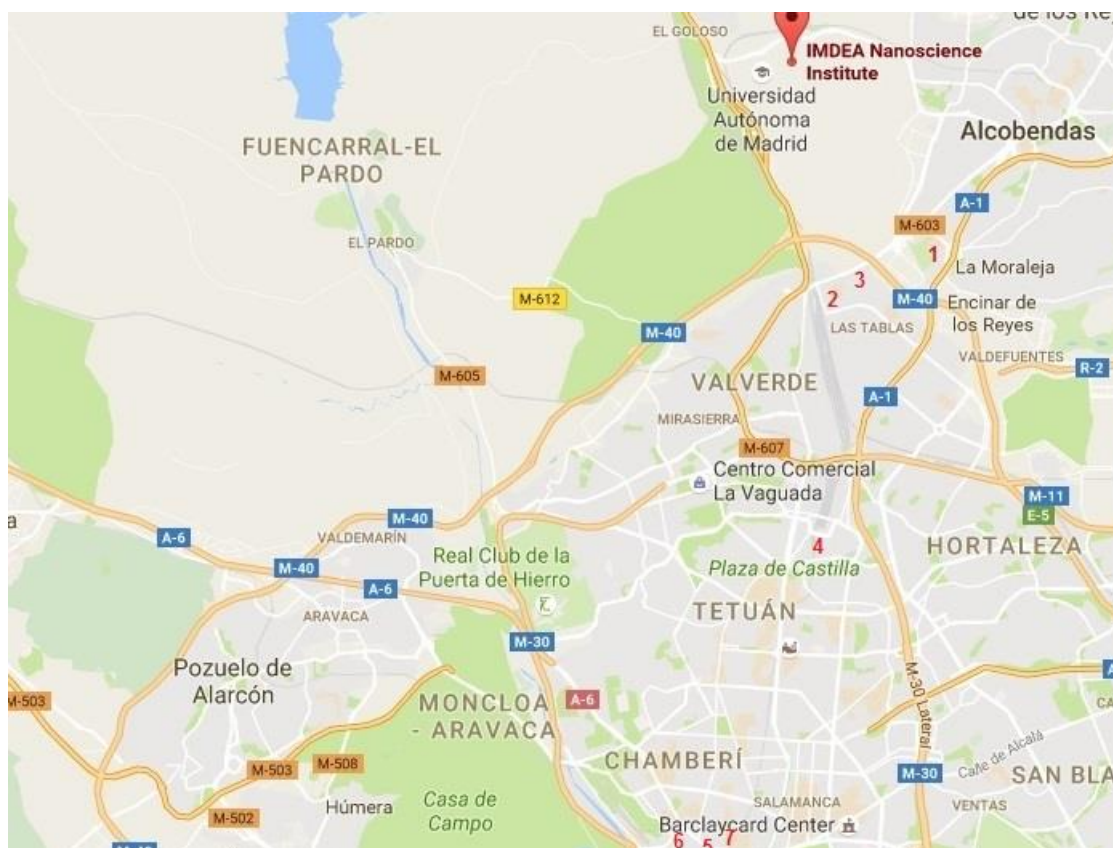
To get from the train station to IMDEA Nanoscience, go straight to the pedestrian road "Avenida Tomás y Valiente" and follow it to the third roundabout (ca. 1000 m), turn right and you stand right in front of the institute. It is a nice walk of 10-15 min thru the campus of the Univeristy Autonoma of Madrid.



Map Conference Venue location



Map with Hotels and Conference Venue



University Campus accommodation



Erasmus student's residence

Erasmus Residence Hall: <http://www.resa.es/en/residences/madrid/residence-hall-erasmo/residence/>

You can reserve accommodation per days: <http://www.resainn.com/>

The residence is situated within the campus at 5 min walking distance from IMDEA Nanociencia. Quiet surroundings in the evening as it is far from the city

Contact Details

Campus Universitario de Cantoblanco

C/ Erasmo de Rotterdam, 5-7

28049 Madrid

Email: erasmo@resa.es

Hotels in the outskirts of Madrid

Hotel La Moraleja - 4 stars

Hotel: map 1



La Moraleja: the duality of a strategic location and a privileged place to combine leisure and business in the most exclusive area of Madrid. Restaurant with Spanish and international cuisine in a comfortable and cozy space with an exclusive service to enjoy.

Contact Details

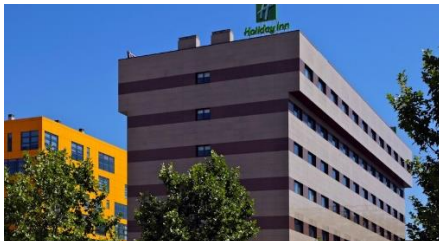
Hotel La Moraleja
Avenida de Europa,
17 Alcobendas
Madrid

Tel: 020 3564 5165

<http://www.hotellamoraleja.com/>

Holiday Inn – Las Tablas – 4 stars

Hotel: map 2



Set in Madrid's financial district, Holiday Inn Madrid - Las Tablas is just 10 minutes' walk from the Las Tablas Metro Station. Free Wi-Fi is available throughout the building.

The modern air-conditioned rooms feature a flat-screen TV and a desk. The private bathroom is equipped with a hairdryer and luxury toiletries.

Holiday Inn Madrid - Las Tablas has a stylish lounge, restaurant and bar.

The hotel is situated in the city's Fuencarral district, near Universidad Autónoma de Madrid. IFEMA Trade Centre is 15 minutes' away by car. Theme Park Micropolix and Warner Bros Park are easily accessible by car within a 15-minute drive.

Contact Details

Calle Maria Tubau, 16,
Fuencarral-El Pardo,
28050 Madrid,
Spain

<https://www.ihg.com/holidayinn/hotels/gb/en/reservation>

Hotel Dome, Madrid – 4 Stars

Hotel: map 3



The contemporary Hotel Dome is a 4-star property set in close proximity to Santiago Bernabéu Stadium, Paseo de la Castellana and IFEMA featuring an outdoor swimming pool and a golf course.

A metro station as well as Ronda de la Comunicación subway station are not far from the hotel. The hotel is 850 meters away from Ciudad de Telefónica, Ruber Internacional Hospital and Renoir Cuatro Caminos Cinema.

Hotel Dome lies within 10 minutes' drive to Barajas airport.

Contact Details

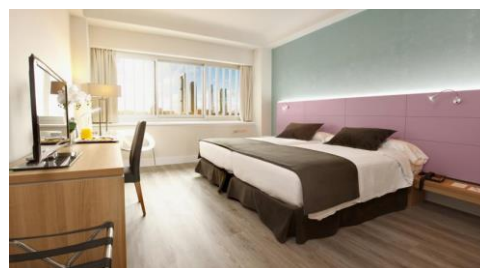
C/Maria Tubau, 6,
Madrid, Spain

<http://hotel-dome.madridrealhotel.com/en/>

Hotels with good public communications to IMDEA and the city/airport:

Hotel Weare Chamartin – 4 Stars

Hotel: map 4



The best communicated Hotel in Madrid.

The Weare Chamartín Hotel is a refurbished hotel close to Chamartín station, Madrid with spaces of modern design and services specialised in the leisure traveller and in business travellers who come to the capital for business, conferences or meetings.

Enjoy the advantages of a 4-star hotel near Paseo de la Castellana, within a few minutes drive to Adolfo Suárez Barajas Madrid Airport and to the fair centres of IFEMA, really close to Bernabéu stadium and the main tourist attractions of Madrid. Besides, the hotel has good communications with the most active business centres of the capital. It is a modern hotel with a state-of-the-art equipment

and personalised attention, which make it the perfect option for resting, working and discovering the city of Madrid.

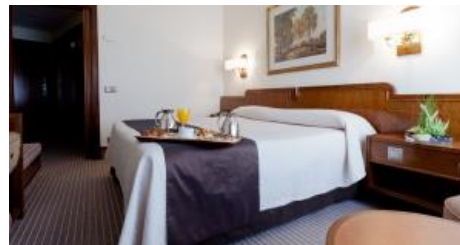
Contact Details

Calle de Agustín de Foxá s/n
Chamartín, 28036
Madrid, Spain
Telephone: +34 91 334 49 00
Telephone: +34 91 334 49 29
Telephone: +34 91 334 49 05
Email: reservas@hotelchamartin.es
<http://en.weare-chamartin.com/>

Hotels in the city centre

Hotel Liabeny – 4 Stars

Hotel: map 5



Located just 200 yards from Puerta del Sol in the centre of Madrid, Liabeny includes a gym with a sauna. The modern rooms feature a flat-screen TV and free Wi-Fi.

Many of Madrid's attractions are just a short walk from the Liabeny. The Prado and Thyssen-Bornemisza Museums are less than 10 minutes away.

The Liabeny is also well-located for transport connections. Gran Vía and Callao metro stations are both just 200 yards away.

Contact Details

Salud, 3,
Madrid City Centre,
28013 Madrid,
Spain
<http://www.liabeny.es/en/>

Hotel Mayorazgo – 4 Stars

Hotel: map 6



Hotel Mayorazgo's elegant rooms have a flat-screen TV, safe and minibar. The hotel is next to Madrid's Gran Vía, a short walk from Plaza España and the Royal Palace.

Plaza de España and Santo Domingo Metro Stations are both 150 yards away. They provide easy access to the Art Triangle, the Retiro Park and Madrid Barajas Airport.

Contact Details

C/ Flor Baja, 3 –
28013, Madrid
Spain

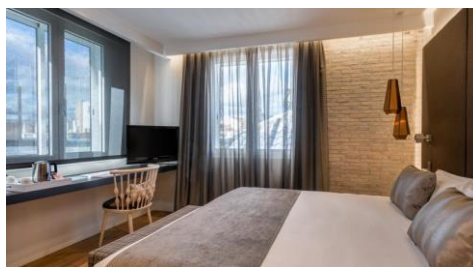
Tel: (+34) 91 547 26 00 -

Fax: (+34) 91 541 24 85

reservas@hotelmayorazgo.com

Catalonia Gran Vía– 4 Stars

Hotel: map 7



The stylish hotel is located in central Madrid, between Puerta del Sol and Plaza de Cibeles.

Catalonia Gran Vía's restaurant, La Pedrera, serves Mediterranean and international cuisine. A buffet breakfast is available, consisting of fresh fruit, cheese, Spanish omelette, cold meats and bread rolls. The hotel's bar offers a range of cocktails and screens important sports on a large TV.

Puerta de Atocha Railway Station offers a high-speed AVE service and is 7 minutes' drive from the hotel. Adolfo Suarez Madrid-Barajas Airport is 14 km away.

Contact Details

Gran Vía, 9,
Madrid City Centre,
28013 Madrid,
Spain

http://www.hoteles-catalonia.com/en/our_hotels/europa/spain/madrid/madrid/hotel_catalonia_gran_via/